



## How To Measure Guide

The measurements we need, to give you an accurate price and layout are fairly simple. A few things to keep in mind are:

- Measure in inches only.
- Do not measure your cabinets, measure your walls as if the room were empty.
- Measure any appliances that you are keeping.
- Note ceiling height and soffit height (if applicable).

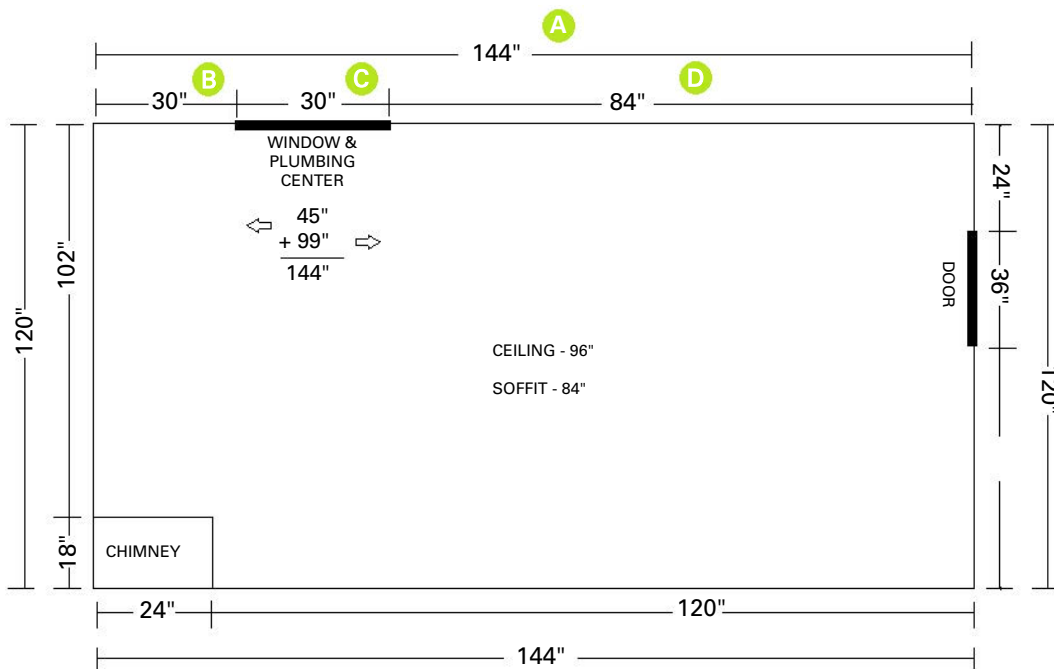
Using the guide below, give us a simple floor plan of your kitchen.

- A** - Measure the size of the wall.
- B** - If there are any windows or doors, measure from the left corner to the molding.
- C** - Measure the windows and doors themselves (include molding in measurements).
- D** - Measure from the window/door molding to the right corner.

Measurements "B" + "C" + "D" should equal "A".

- As an example, see the diagram to the right.
- Follow these steps in sequence around your room until you return to the starting point.

**Please keep in mind that this is only an ESTIMATE and accurate measurements will be taken by a professional measurer after an order has been placed.**





## You Give Us the Measurements, We'll Do the Rest!

**Wall 1**

The grid is a large square area defined by four walls: Wall 1 at the top, Wall 2 on the left, Wall 3 at the bottom, and Wall 4 on the right. The grid consists of 30 columns and 30 rows of small squares, providing a scale for taking measurements.

**Wall 3**

Please make note of all New / Existing appliances and windows less than 36" from the floor.

Notes: \_\_\_\_\_  
\_\_\_\_\_  
\_\_\_\_\_